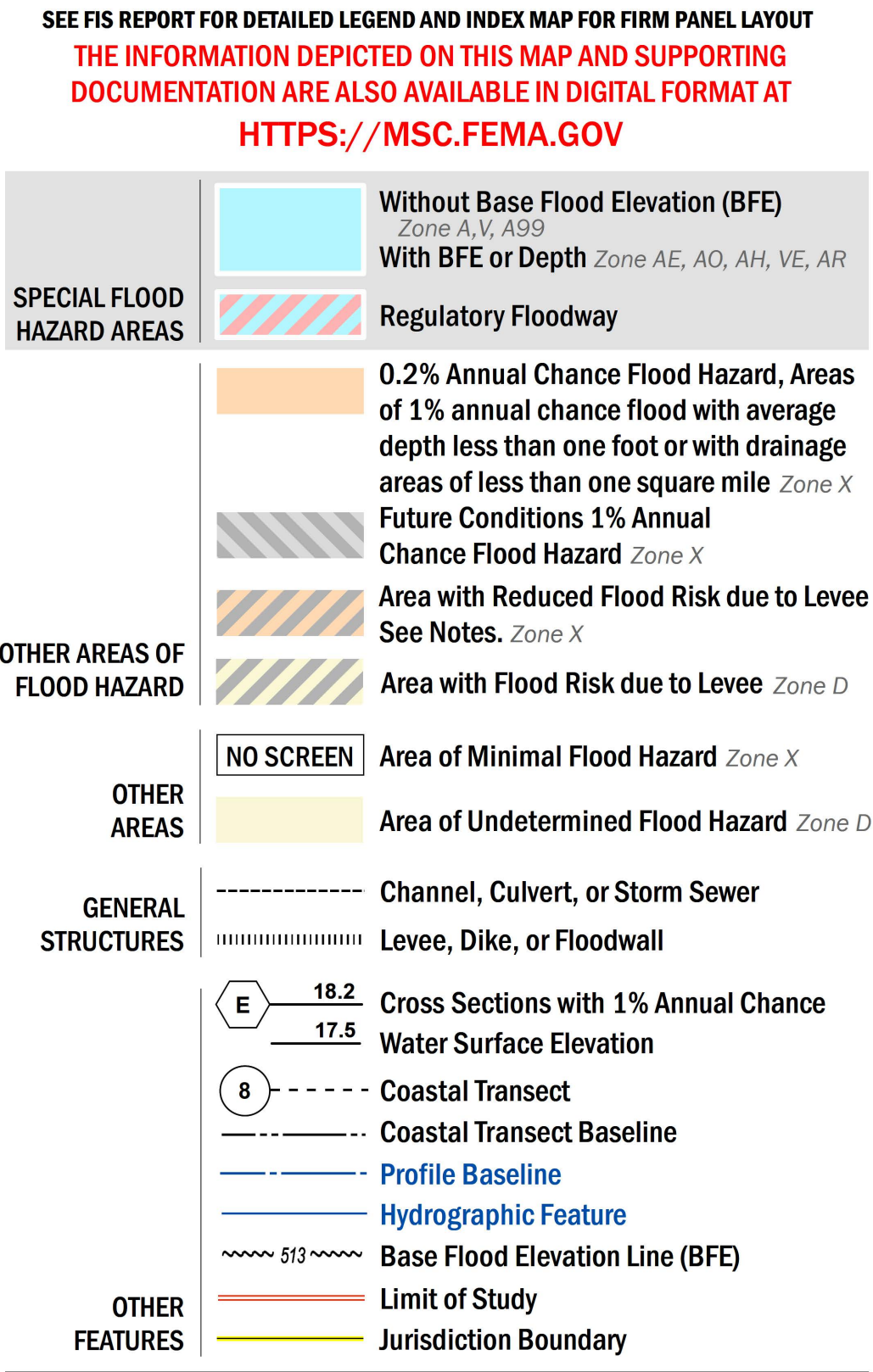


FLOOD HAZARD INFORMATION



NOTES TO USERS

For information and questions about this Flood Insurance Rate Map (FIRM), available products associated with this FIRM, including historic versions, the current map date for each FIRM panel, how to order products, or the National Flood Insurance Program (NFIP) in general, please call the FEMA Map Information eXchange at 1-877-FEMA-MAP (1-877-336-2627) or visit the FEMA Flood Map Service Center website at <https://msc.fema.gov>. Available products may include previously issued Letters of Map Change, a Flood Insurance Study Report, and/or digital versions of this map. Many of these products can be ordered or obtained directly from the website.

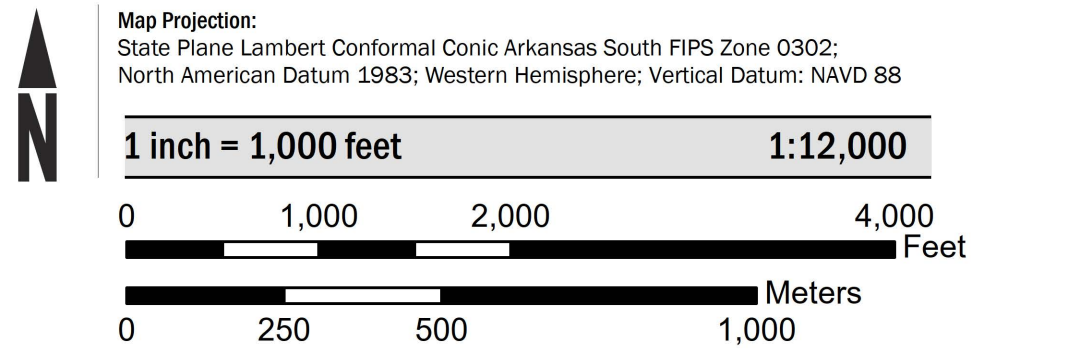
Communities annexing land on adjacent FIRM panels must obtain a current copy of the adjacent panel as well as the current FIRM index. These may be ordered directly from the Map Service Center at the number listed above.

For community and countywide map dates refer to the Flood Insurance Study report for this jurisdiction.

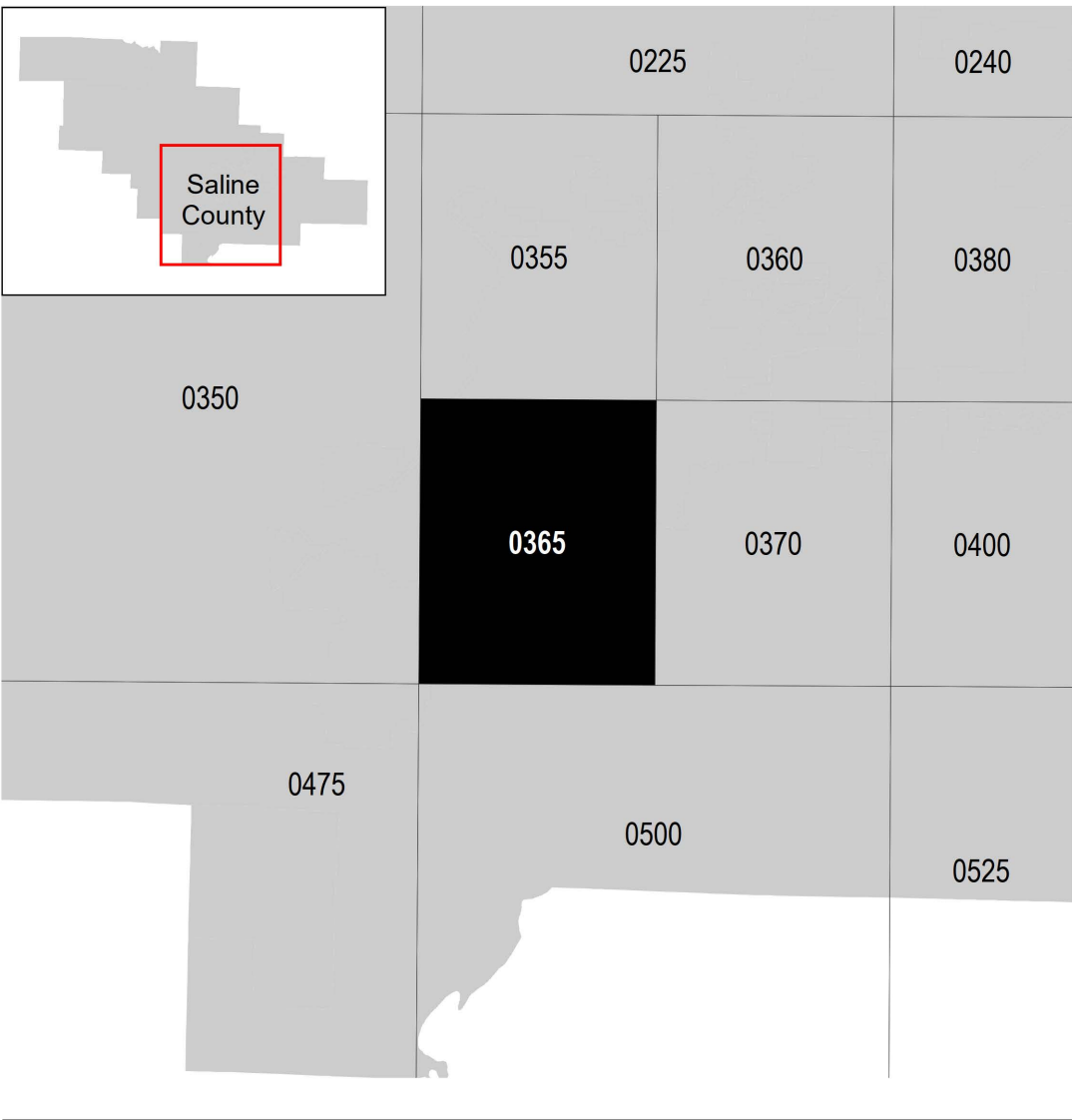
To determine if flood insurance is available in the community, contact your insurance agent or call the National Flood Insurance Program at 1-800-638-6620.

Base map information shown on this FIRM was derived from U.S. Census Bureau TIGER files, dated 2015, and digital data provided by the Arkansas Geographic Information Office, dated 2015.

SCALE



PANEL LOCATOR



National Flood Insurance Program

NATIONAL FLOOD INSURANCE PROGRAM
FLOOD INSURANCE RATE MAP

SALINE COUNTY, ARKANSAS
and Incorporated Areas

PANEL 365 OF 575

Panel Contains:

COMMUNITY	NUMBER	PANEL	SUFFIX
BENTON, CITY OF	050192	0365	E
HASKELL, CITY OF	050416	0365	E
SALINE COUNTY	050191	0365	E

VERSION NUMBER
2.3.3.2

MAP NUMBER
05125C0365E

MAP REVISED
JUNE 5, 2020